



Knelston Primary School

Governors' Annual Report to Parents 2022-2023

	Address	Knelston Primary School Reynoldston Gower Swansea, SA3 1AR	
	Phone/Fax	01792 390071	
	Email	Knelston.primary@swansea-edunet.gov.uk	

Introduction from the Chair of Governors

Dear Parents,

On behalf of the Governing Body of Knelston Primary School I am pleased to present the Annual Report for the academic year 2022/23

In another extraordinary year, we are extremely grateful to Mrs. Adkins who did an amazing job when she stepped into the role of Acting Head Teacher when Mr. Jenkins was on extended leave. Together with the staff she worked extremely hard to ensure that everything continued to run smoothly. We were very sorry to see her go at the end of the year and wish her all the very best in her new school. We are also grateful to the staff for the way in which they supported Mrs. Adkins to ensure that the children continued to receive the best learning experiences possible. We were also delighted to welcome Mr. Jenkins back at the end of the year.

As a Governing Body we were pleased to get back together in person after two years of virtual meetings. We were very sorry to say goodbye to Janet Bygate who served the school for many years as a member of staff as well as a Community Governor.

As ever we are extremely grateful to the PTA who work so hard to support the school. One of the highlights of the year was the Fairy Hill Ball, which raised a lot of money; as well as being a great night out for all those who were lucky enough to attend. We also owe the PTA thanks for the installation of the outdoor agility trail which has given the children a great deal of pleasure and the purchase of the school minibus.

The children will also be able to enjoy the Remembrance Garden which has been sponsored by the British Legion. It will provide a sense of history, as well as quiet natural space for respite and reflection.

As ever you can follow the progress of the school via the newsletters and Twitter. If you have any concerns or questions, please do not hesitate to contact me or any of the governors.

Kathryn David
Chair of Governors

At Knelston Primary School we aim to:

- Create a happy, exciting, safe and caring environment.
- Build the happiness and emotional wellbeing of our school community
- Promote respect for ourselves and value and celebrate diversity
- Inspire, motivate and challenge through a stimulating environment and an inspiring, challenging curriculum
- Raise aspirations, praising and celebrating achievements of all

Governing Body Details	
<p>Chair of Governors</p> <p>Mrs Kathryn David</p> <p>c/o Knelston Primary School</p> <p>Reynoldston</p> <p>Gower</p> <p>SA3 1AR</p> <p>Term of office ends: 22/10/25</p>	<p>Clerk to Governors</p> <p>Mrs Rhian Hughes-Morgan</p> <p>c/o Knelston Primary School</p> <p>Reynoldston</p> <p>Gower</p> <p>SA3 1AR</p> <p>Term of office ends: N/A</p>
<p>Mr Courtney Grove</p> <p>Vice Chair</p> <p>Local Education Authority</p> <p>Term of office ends: 26/10/2026</p>	<p>Mr Philip Jenkins</p> <p>Headteacher</p> <p>Knelston Primary School</p> <p>Term of office ends: N/A</p>
<p>Mr Kieron Donovan</p> <p>Teacher representative</p> <p>Term of office ends 24/9/2024</p>	<p>Mrs Dawn Latham</p> <p>Staff Governor</p> <p>Term of office ends: 23/09/2023</p>
<p>Jaime Hill</p> <p>Parent Governor</p> <p>Term of office ends: 10/06/2025</p>	<p>Vacancy</p> <p>Community Governor</p>
<p>Ms Eve Wakeford</p> <p>Parent Governor</p> <p>Term of office ends 30/01/2024</p>	<p>Mr Richard Lewis</p> <p>Local Education Authority</p> <p>Term of office ends: 02/08/2024</p>
<p>Dr Nicola Jones</p> <p>Parent Governor</p> <p>Term of office ends: 24/05/2026</p>	<p>Mrs Dawn Thomas</p> <p>Community Governor</p> <p>Term of office ends: 16/10/2023</p>
<p>Mr Ian Button</p> <p>Additional Community Governor</p> <p>Term of office ends: 01/12/2023</p>	<p>Vacancy</p> <p>Community Governor</p> <p>Term of office ends:</p>
<p>Mr Oliver Campbell-Kelly</p> <p>Parent Governor</p> <p>Term of office ends: 28/11/2023</p>	

Financial Details

END OF YEAR STATEMENT 2022/2023

SCHOOL: Knelston Primary

STATEMENT OF ACTUAL EXPENDITURE 2022/23 FINANCIAL YEAR

	Delegated Expenditure £	Non-Delegated Expenditure £	Total Net Expenditure £
Teachers Salaries	325,132	0	325,132
Salaries	139,580	32,774	172,353
Other Employee Costs	60	365	425
Premises	6,144	0	6,144
Transport	0	103,374	103,374
Supplies & Services	116,617	0	116,617
Recharges	42,281	0	42,281
Gross Expenditure	629,813	136,513	766,326
Grant Income	-67,399	0	-67,399
Other Income	-63,811	0	-63,811
Gross Income	-131,210	0	-131,210
Net Expenditure	498,603	136,513	635,116

RESERVES:	£
FINAL FORMULA ALLOCATION:	485,894
TOTAL NET EXPENDITURE:	498,603
TRANSFER TO / (FROM) RESERVES:	-12,709
OPENING BALANCE ON RESERVES 01/04/22	143,484
CLOSING BALANCE ON RESERVES: 31/03/23	130,775

No members of the Governing Body have claimed any travel, subsistence or other expenses.

Admission Arrangements

The school admission number is currently 19 in each year group. The school follows the Local Authority procedures with regards to admissions. For more information regarding admissions please contact the LA on 01792 636549

The School Development Plan

The School Development Plan has been developed from the key priorities identified through the robust self-evaluation processes the school carries out. The school has made comprehensive plans to address each of the key priorities and constantly reviews progress with children, staff, governors and other stakeholders.

The following gives an outline of the elements of each focus that we have developed at Knelston over the last academic year. The targets and action points have been developed by teams of staff, governors and

pupils and take into account a range of stakeholder input. We will keep stakeholders up to date with actions and outcomes throughout the academic year. The key elements of the plan are outlined below. This will be reviewed and developed throughout the year.

Learning

To ensure all children are challenged to make the best progress

Wellbeing and attitudes to learning

To ensure all children are happy, healthy, safe and enjoy their learning

Provision

Improve independence of learners in applying skills

Care support and guidance

To ensure all children get the best for their needs

Leadership

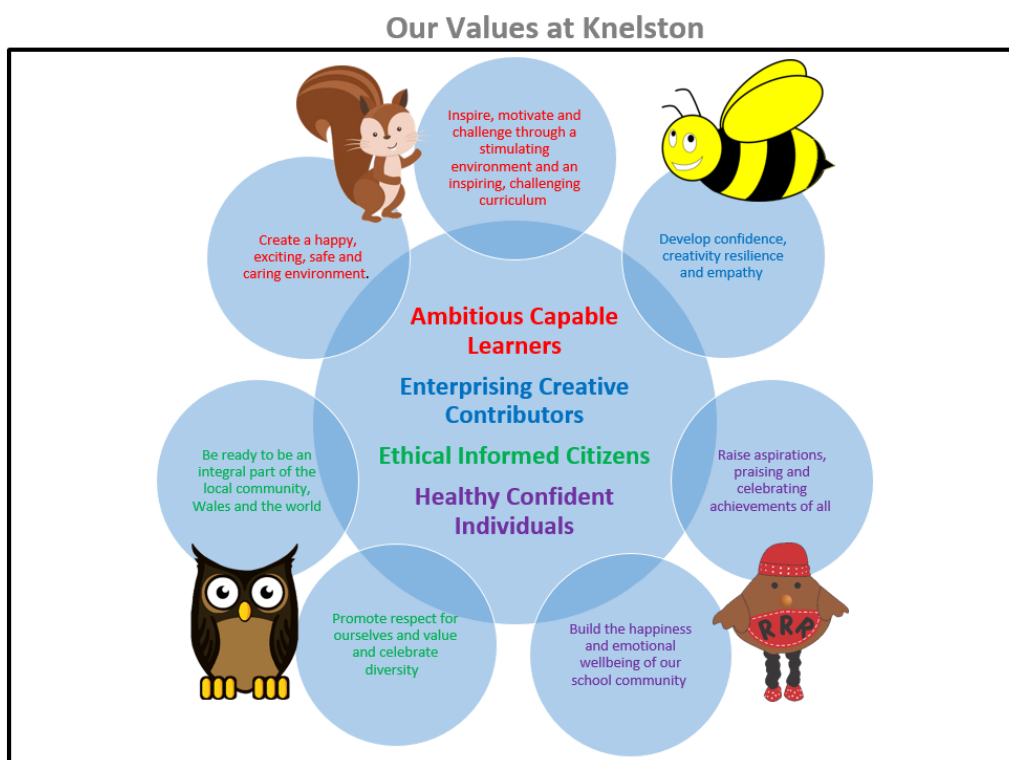
To improve the strategic leadership of the school.

School Prospectus

The school prospectus has been updated to reflect changes in staff and policy. It can be accessed via the school website, or by requesting a copy from the office.

Curriculum and Teaching

School Vision and Values



Curriculum Organisation

The statutory requirement to provide a broad, balanced curriculum is met through the use of whole school termly themes and topics from the curriculum framework as contexts for learning. We have an enrichment day each week to focus on enhancing skills in a range of creative areas. We have developed learning zones in the central area. These zones will encourage children to work independently and interdependently to improve skills in Science, Technology, Expressive Arts, Humanities and Health & Well-being. Wherever possible we engage and motivate the children through first hand learning experiences, which include visits, visitors and outdoor learning opportunities. Each term we have a topic launch day to inspire and enthuse the children in leading their own learning and planning the topic.

Foundation Phase

Children in Foundation Phase follow our bespoke Knelston curriculum, following the key Foundation phase principles to offer a broad and balanced start to their learning at school.

The activities and experiences provided support and promote each child's individual developmental needs. Within a stimulating environment both indoors and out, the key learning skills such as listening, speaking concentrating, sharing and working cooperatively with others are developed. At this stage, the basic foundations of all future learning are laid and there is a clear emphasis on developing the essential skills of communication, literacy and numeracy.

Key Stage 2

In Key Stage 2, teachers use the What Matter Statements contained in the Areas of Learning and Experience as the basis for establishing their topics or themes. Our thematic approach builds on the statutory requirements by identifying combinations of subjects across the curriculum that cover relevant and complementary content and develop a range of skills. Skills progression is built into our planning and is developed within real contexts and whole school themes.

New Curriculum for Wales

The school has developed its own bespoke curriculum under the guidance of the new curriculum for Wales. This is a dynamic curriculum and will continue to be refined and developed as we reflect on its implementation. Our vision for our curriculum can be found on our website and parents enjoyed learning all about it in our curriculum sharing event this year.

Admission Arrangements for Disabled Pupils

Pupils with disabilities are subject to the normal admission procedures. Wherever possible, adaptations are made to the school site in order to accommodate pupils with physical disabilities.

Additional Learning Needs

We continue to provide a high standard of support within the framework of the Additional Learning Needs and Education Tribunal (Wales) Act 2018. We are currently implementing the new ALN Bill and the changes to practice this will entail.

When a member of the teaching staff has a concern related to the academic progress, emotional development or medical condition of a pupil, they bring their concerns/observations to the attention of the Additional Learning Needs Co-ordinator (ALNCO). The teacher and ALNCO then decide on a course of action and if appropriate, place the pupil on the ALN list. Pupils with a Statement of Educational Needs are also entered onto the ALN Register.

Occasionally referrals are made to Access to Learning, the City and County of Swansea's ALN support team, asking for advice from specialist teachers employed by this survey. Pupils referred might already be entered on the ALN list or might be new additions.

All pupils listed on the ALN register are required by the Code of Practice to receive an Individual Education Plan which is written with direct reference to their specific needs. Our IEPs are written and reviewed termly, in accordance with the Code of Practice, and where possible the views of all stake holders are sought.

Mr Jenkins is the ALNCO at Knelston Primary School. He coordinates all meetings, phone calls, and documentation connected with pupils on the ALN register. Alongside Mrs Porter he also timetables the work of our Learning Support Assistants who provide help and guidance for pupils individually or in small groups. Mr Jenkins and Mrs Porter are always happy to discuss your child's progress in relation to special needs, should you wish to do so.

The Code of Practice requires that a member of the governing body is allocated the responsibility of liaising with the ALNCO and Headteacher, in order to maintain a high standard of provision for the children with special needs. Our current ALN support governor at Knelston Primary School is Nicola Jones.

Links with the Community

The school continues to enjoy many positive links with the community. Some of these mentioned have had to been suspended due to the pandemic, but will resume once appropriate

- We are an Ocean Guardian school and campaign and help to keep our local environment beautiful
- Visits from PC Hadley who supports the PSE curriculum
- Working with the local community police for road safety, e-safety and relevant local issues
- Local artists in residence
- Visits to local beaches, church, exhibitions, village halls.
- Visits from a wide range of partners and experts during our topic launch days
- Mural of Gower painted by the children installed in Singleton Hospital

Welsh Provision and Bilingualism

Knelston is an English medium school that recognises the importance of promoting and embracing the Welsh language and culture. Children throughout the school are encouraged to speak Welsh both in and outside of the classroom. All staff, both teaching and non-teaching use incidental Welsh throughout the day and Welsh is integrated into all areas of learning. During our weekly Celebration Assembly, children who have been heard using Welsh outside the classroom are recognised.

The Welsh scheme of work defines the sentence patterns and vocabulary to be introduced and reinforced in each year group. We are also supported by a county advisory teacher, Athrawes Bro, who provides support to the teachers and learners.

Through our thematic approach to learning and teaching we ensure that the children develop their awareness of our cultural heritage in Wales. This might include visits within the immediate or wider community, visitors into school or research. We also hold an annual Eisteddfod in celebration of St David's day, to which parents, families and other community members are welcomed.

Sport

The school provides a well-balanced physical development/education curriculum following Foundation Phase guidelines and the curriculum orders. This year children have also:

Rugby sessions, Football club

Athletics meetings, Cross Country.

Residential activity 2 days for Year 4 at St Madoc

Residential activity 5 days for Year 5 and 6

Premises & Grounds

New foyer remodelled

New agility trail purchased by PTA

New reflection area created outdoors

New LLC outdoor area being developed

New outdoor learning areas developed in Y4/5/6 classes

Health and Safety

Local authority inspection October 2023 found excellent compliance and maintenance throughout the school and grounds.

Transition

We continue to enjoy a very positive relationship with our partner comprehensive school, Bishopston. The usual programme of events was very successful to help the children familiarise themselves with their new environment and meet their new classmates. Regular meetings also take place between the Head teachers of Bishopston cluster primary schools and shared initiatives are developed through staff collaboration and shared INSET training sessions.

Session Times

Key Stage	a.m. times	p.m. times
Nursery	9.15-11.45	
Foundation Phase	9.15-12.00	12.55-3.30
Key Stage 2	9.15-12.15	12.55-3.30

Annual Attendance and Absence Figures

Due to the pandemic attendance monitoring was suspended over the previous academic year.

Pupils' attendance has a great impact on their learning. Our target is 93% please help us achieve this by not taking holidays in school term time and making sure your child attends school if they are well

School term and holiday dates 2023-2024

Term	Term begins	Mid-term holiday begins	Mid-term holiday ends	Terms ends	Total days
Autumn 2023	Friday 1 September	Monday 30 October	Friday 3 November	Friday 22 December	76
Spring 2024	Monday 8 January	Monday 12 February	Friday 16 February	Friday 22 March	50
Summer 2024	Monday 8 April	Monday 27 May	Friday 31 May	Friday 19 July	69
Total					195