



Knelston Primary School		
Governors' Annual Report to Parents 2020-21		
	Address	Knelston Primary School Reynoldston Gower Swansea, SA3 1AR
	Phone/Fax	01792 390071
	Email	Knelston.primary@swansea-edunet.gov.uk
		

Opening Statement Covid 19 Pandemic.

Once again the pandemic had a huge effect the operation of education and the school. The school was closed to most learners and learning was delivered remotely from December 14th 2020 until 15th March 2021. As a result many of the statutory assessment and reporting mechanisms were suspended. This means that this report does not include any performance indicators.

In the face of these challenges the school staff showed dedication, resilience and flexibility. Like many of you they managed to juggle working from home while home schooling their own children. The remote learning provision became more comprehensive, while the school was still open as an emergency childcare facility for vulnerable and key worker children. I would like to take this opportunity to pass on my appreciation for all that they did and for your commitment as parents to help facilitate your child's learning at home. Since the beginning of the pandemic, the work of our school staff and the wider school community has made me immensely proud. I would like to thank our learners for how they have approached this strange time in their learning and make a promise to them that we will continue to ensure that every one of them has the best possible opportunities with their learning.

Introduction from the Chair of Governors

Dear Parents,

On behalf of the Governing Body of Knelston Primary School I am pleased to present the Annual Report for the academic year 2020/21

In another extraordinary year, we are grateful to Mr. Jenkins and all the staff for the way in which they responded to the challenges created by the pandemic and for working so hard to ensure that the children continued to have the best learning experience possible. We realize that it has been a difficult year for parents too and appreciate your support.

As a Governing Body we continued to hold virtual meetings and the small Emergency Governing Body remained in place to support the school leadership team during the height of the various lockdowns. We were very sorry to say goodbye to Sarah Frend, a long-standing member and supporter of the school who served as both a Parent Governor and, latterly, a Community Governor. We were equally delighted to welcome Rev. Justin Davies, or 'Vicar Justin' as he's known to the children, as our new Community Governor.

One of the highlights of the year has been the development of the vegetable garden and we are grateful to the PTA for their offer to provide a polytunnel.

As ever you can follow the progress of the school via the newsletters and Twitter. If you have any concerns or questions, please do not hesitate to contact me or any of the governors.

Kathryn David
Chair of Governors

At Knelston Primary School we aim to:

- Create a happy, exciting, safe and caring environment.
- Build the happiness and emotional wellbeing of our school community
- Promote respect for ourselves and value and celebrate diversity
- Inspire, motivate and challenge through a stimulating environment and an inspiring, challenging curriculum
- Raise aspirations, praising and celebrating achievements of all

Governing Body Details

<p>Chair of Governors</p> <p>Mrs Kathryn David</p> <p>c/o Knelston Primary School</p> <p>Reynoldston</p> <p>Gower</p> <p>SA3 1AR</p> <p>Term of office ends: 22/02/2022</p>	<p>Clerk to Governors</p> <p>Ms Stef Munday</p> <p>c/o Knelston Primary School</p> <p>Reynoldston</p> <p>Gower</p> <p>SA3 1AR</p> <p>Term of office ends: N/A</p>
<p>Mr Courtney Grove</p> <p>Vice Chair</p> <p>Local Education Authority</p> <p>Term of office ends: 18/10/2022</p>	<p>Mr Philip Jenkins</p> <p>Headteacher</p> <p>Knelston Primary School</p> <p>Term of office ends: N/A</p>
<p>Mr Kieron Donovan</p> <p>Teacher representative</p> <p>Term of office ends 24/9/2023</p>	<p>Mrs Dawn Latham</p> <p>Staff Governor</p> <p>Term of office ends: 23/09/2023</p>
<p>Ms Jane Sinnott</p> <p>Parent Governor</p> <p>Term of office ends: 24/10/2021</p>	<p>Reverend Justin Davies</p> <p>Community Governor</p> <p>Term of Office ends 03/06/2025</p>
<p>Mrs Eve Wakeford</p> <p>Parent Governor</p> <p>Term of office ends 30/01/2024</p>	<p>Mr Richard Lewis</p> <p>Local Education Authority</p> <p>Term of office ends: 03/08/2024</p>
<p>Dr Nicola Jones</p> <p>Parent Governor</p>	<p>Mrs Dawn Thomas</p> <p>Parent Governor</p>

Term of office ends: 24/10/2022	Term of office ends: 09/11/2023
Mr Ian Button Additional Community Governor Term of office ends: 01/12/2022	Mrs Janet Bygate Community Governor Term of office ends: 31/01/2022
Mr Oliver Campbell-Kelly Parent Governor Term of office ends: 01/12/2022	

Financial Details

END OF YEAR STATEMENT 2020/2021
--

STATEMENT OF ACTUAL EXPENDITURE 2020/21 FINANCIAL YEAR

	Delegated Expenditure £	Non-Delegated Expenditure £	Total Net Expenditure £
Teachers Salaries	310,525		310,525
Salaries	125,923	15,336	141,258
Other Employee Costs	-1	-24	-25
Premises	15,953		15,953
Transport		59,977	59,977
Supplies & Services	22,060		22,060
Recharges	43,013	200	43,213
Gross Expenditure	517,473	75,489	592,962
<i>Grant Income</i>	-89,559		-89,559
<i>Other Income</i>	-11,755		-11,755
Gross Income	-101,314	0	-101,314

Net Expenditure	416,159	75,489	491,648

RESERVES:	£
FINAL FORMULA ALLOCATION:	456,175
TOTAL NET EXPENDITURE:	416,159
TRANSFER TO / (FROM) RESERVES:	40,016
OPENING BALANCE ON RESERVES 01/04/20	77,072
CLOSING BALANCE ON RESERVES: 31/03/21	117,088

No members of the Governing Body have claimed any travel, subsistence or other expenses.

Admission Arrangements

The school admission number is currently 19 in each year group. The school follows the Local Authority procedures with regards to admissions. For more information regarding admissions please contact the LA on 01792 636549

The School Development Plan

The School Development Plan has been developed from the key priorities identified through the robust self evaluation processes the school carries out. The school has made comprehensive plans to address each of the key priorities and constantly reviews progress with children, staff, governors and other stakeholders.

The following gives an outline of the elements of each focus that we have developed at Knelston over the last academic year. The targets and action points have been developed by teams of staff, governors and pupils and take into account a range of stakeholder input. We will keep stakeholders up to date with actions and outcomes throughout the academic year. A new plan will be put together for the coming academic year early in the Autumn term.

Learning

To ensure all children are challenged to make the best progress

Wellbeing and attitudes to learning

To ensure all children are happy, healthy, safe and enjoy their learning

Provision

Improve independence of learners in applying skills

Care support and guidance

To ensure all children get the best for their needs

Leadership

To improve the strategic leadership of the school.

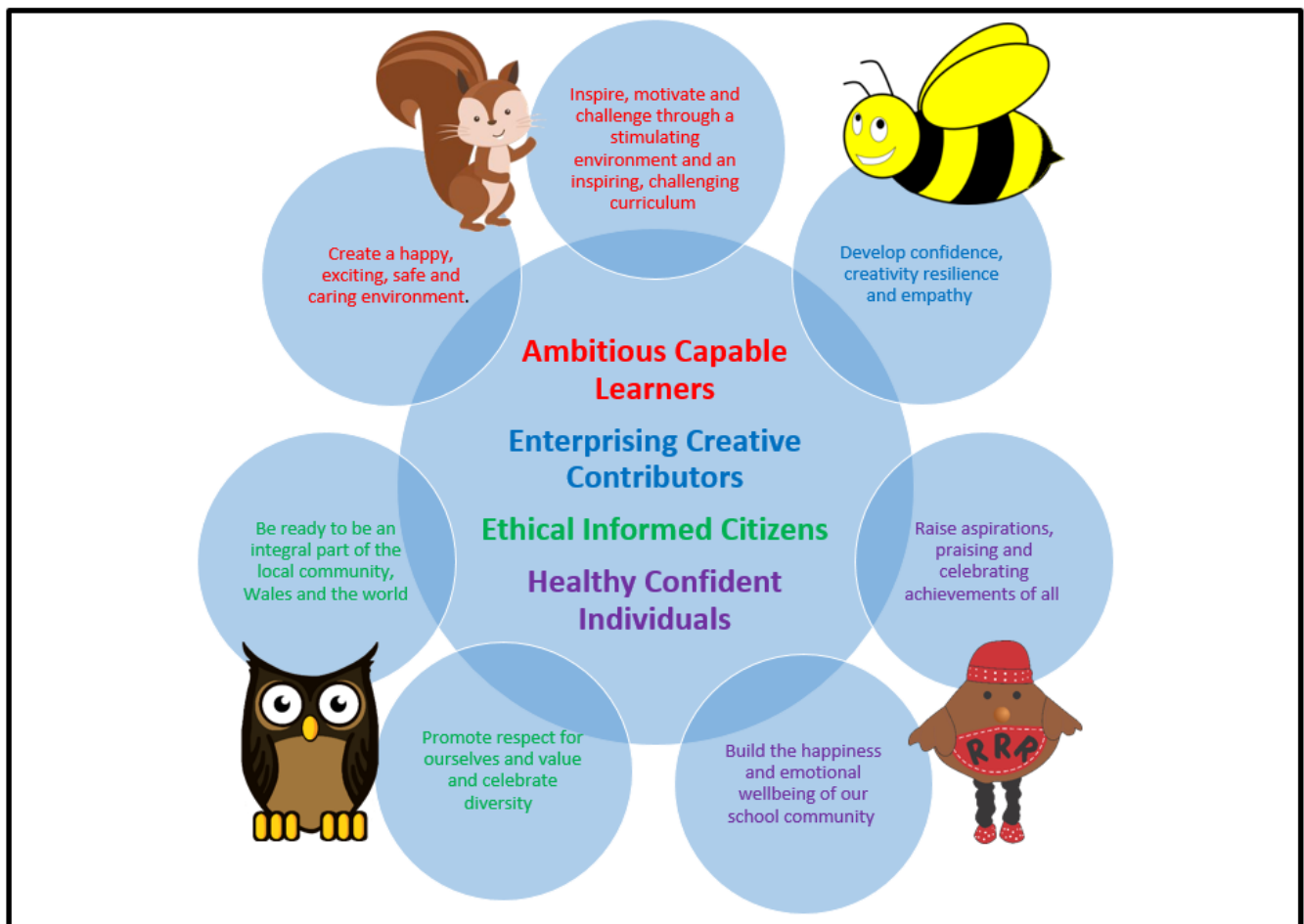
School Prospectus

The school prospectus has been updated to reflect changes in staff and policy. It can be accessed via the school website, or by requesting a copy from the office.

Curriculum and Teaching

School Vision and Values

Our Values at Knelston



Curriculum Organisation

The statutory requirement to provide a broad, balanced curriculum is met through the use of whole school termly themes and topics from the curriculum framework as contexts for learning. We have an enrichment day each week to focus on enhancing skills in a range of creative areas. We have developed learning

zones in the central area. These zones will encourage children to work independently and interdependently to improve skills in Science, Technology, Expressive Arts, Humanities and Health & Well-being. Wherever possible we engage and motivate the children through first hand learning experiences, which include visits, visitors and outdoor learning opportunities. Each term we have a topic launch day to inspire and enthuse the children in leading their own learning and planning the topic.

Foundation Phase

Children in Foundation Phase follow the six areas of learning described in the document 'Curriculum for Wales Foundation Phase Framework (Revised 2015)'.

The activities and experiences provided support and promote each child's individual developmental needs. Within a stimulating environment both indoors and out, the key learning skills such as listening, speaking concentrating, sharing and working cooperatively with others are developed. At this stage, the basic foundations of all future learning are laid and there is a clear emphasis on developing the essential skills of communication, literacy and numeracy.

Key Stage 2

In Key Stage 2, teachers use the National Curriculum Orders as the basis for establishing their topics or themes. Our thematic approach builds on the statutory requirements by identifying combinations of subjects across the curriculum that cover relevant and complementary content and develop a range of skills. Skills progression is built into our planning and is developed within real contexts and whole school themes.

New Curriculum for Wales

The school continues to work hard to develop and refine its environment and practices to be ready for the new curriculum. We are working alongside other schools in Swansea and Wales to fully implement the curriculum for its inception. This is an exciting time and should help us to keep on developing as a learning organisation.

Admission Arrangements for Disabled Pupils

Pupils with disabilities are subject to the normal admission procedures. Wherever possible, adaptations are made to the school site in order to accommodate pupils with physical disabilities.

Additional Learning Needs

We continue to provide a high standard of support within the framework of the Additional Learning Needs and Education Tribunal (Wales) Act 2018. We are currently preparing for the implementation of the new ALN Bill and the changes to practice this will entail. The new practices will be introduced on a rolling programme from January 2022.

When a member of the teaching staff has a concern related to the academic progress, emotional development or medical condition of a pupil, they bring their concerns/observations to the attention of the Additional Learning Needs Co-ordinator (ALNCO). The teacher and ALNCO then decide on a course of action and if appropriate, place the pupil on the ALN list. Pupils with a Statement of Educational Needs are also entered onto the ALN Register.

Occasionally referrals are made to Access to Learning, the City and County of Swansea's ALN support team, asking for advice from specialist teachers employed by this survey. Pupils referred might already be entered on the ALN list or might be new additions.

All pupils listed on the ALN register are required by the Code of Practice to receive an Individual Education Plan which is written with direct reference to their specific needs. Our IEPs are written and reviewed termly, in accordance with the Code of Practice, and where possible the views of all stake holders are sought.

Mr Jenkins is the ALNCO at Knelston Primary School. He coordinates all meetings, phone calls, and documentation connected with pupils on the ALN register. Alongside Mrs Porter he also timetables the work of our Learning Support Assistants who provide help and guidance for pupils individually or in small groups. Mr Jenkins and Mrs Porter are always happy to discuss your child's progress in relation to special needs, should you wish to do so.

The Code of Practice requires that a member of the governing body is allocated the responsibility of liaising with the ALNCO and Headteacher, in order to maintain a high standard of provision for the children with special needs. Our current ALN support governor at Knelston Primary School is Janet Bygate

Links with the Community

The school continues to enjoy many positive links with the community. Some of these mentioned have had to been suspended due to the pandemic, but will resume once appropriate

- Members of the community provide Welsh speaking and reading sessions
- We are an Ocean Guardian school and campaign and help to keep our local environment beautiful
- Visits from PC Hadley who supports the PSE curriculum
- Working with the local community police for road safety, e-safety and relevant local issues
- Local artists in residence
- Visits to local beaches, church, exhibitions, village halls.
- Visits from a wide range of partners and experts during our topic launch days
- Mural of Gower painted by the children installed in Singleton Hospital

Welsh Provision and Bilingualism

Knelston is an English medium school that recognises the importance of promoting and embracing the Welsh language and culture. Children throughout the school are encouraged to speak welsh both in and outside of the classroom. All staff, both teaching and non-teaching use incidental Welsh throughout the day and Welsh is integrated into all areas of learning. During our weekly Celebration Assembly, children who have been heard using Welsh outside the classroom are recognised.

The Welsh scheme of work defines the sentence patterns and vocabulary to be introduced and reinforced in each year group. We are also supported by a county advisory teacher, Athrawes Bro, who provides regular visits. This support includes modelling teaching, provision of resources and ADDs sessions to support planning and teaching.

Through our thematic approach to learning and teaching we ensure that the children develop their awareness of our cultural heritage in Wales. This might include visits within the immediate or wider community, visitors into school or research. We also hold an annual Eisteddfod in celebration of St David's day, to which parents, families and other community members are welcomed.

Sport

The school provides a well-balanced physical development/education curriculum following Foundation Phase guidelines and the curriculum orders. This year children have also:

Ospreys rugby coaching

Rugby sessions, Football club, Netball club, multi sports club

Athletics meetings, Cross Country.

Residential activity 2 days for Year 3 and 4 at St Madoc

Residential activity 5 days for Year 5&6

Premises & Grounds

Outside of school painted

New outdoor learning areas developed in Y4/5/6 classes

A shed has been purchased by the PTA for the Y2 garden to promote and facilitate independent outdoor learning.

New tree seats purchased by community council for use in the Hyfryd area.

Health and Safety

Governing body undertook a range of relevant training

Transition

We continue to enjoy a very positive relationship with our partner comprehensive school, Bishopston. The usual programme of events was cancelled but the children had an online classroom established which allowed them to have a range of experiences to help with transition. Regular meetings also take place between the Head teachers of Bishopston cluster primary schools and shared initiatives are developed through staff collaboration.

Session Times

Key Stage	a.m. times	p.m. times
Nursery	9.15-11.45	
Foundation Phase	9.15-12.00	12.55-3.30
Key Stage 2	9.15-12.15	12.55-3.30

Annual Attendance and Absence Figures

Due to the pandemic attendance monitoring was suspended over the previous academic year.

Pupils' attendance has a great impact on their learning. Our target is 96.5% please help us achieve this by not taking holidays in school term time and making sure your child attends school if they are well.

Forthcoming Term Dates 2021-22

School term and holiday dates 2021-22

Term	Term begins	Mid-term holiday begins	Mid-term holiday ends	Terms ends	Total days
Autumn 2021	Thursday 2 September	Monday 25 October	Friday 29 October	Friday 17 December	72
Spring 2022	Tuesday 4 January	Monday 21 February	Friday 25 February	Friday 8 April	64
Summer 2022	Monday 25 April	Monday 30 May	Friday 3 June	Friday 22 July	59
Total					195

Foundation Phase Comparative reports of performance in end of KS assessments

Statutory end of key stage teacher assessments were not completed this year

Key Stage Two Teacher Assessments
--

Statutory end of key stage teacher assessments were not completed this year